



OAKFIELD



Holmesdale Road, Bexhill-On-Sea
Offers Around £600,000



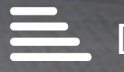
3



1



3



D

SUMMARY

This delightful 1930s three-bedroom detached family home is rich in original character and period charm. Situated in the desirable and family-friendly area of Collington,

The home features attractive, private quite mature gardens and timeless period features throughout. On the ground floor, a welcoming entrance hall leads to a bright, bay-fronted lounge with open fire place.

The bespoke solid wood kitchen includes a traditional pantry and enjoys views over the rear garden.

A spacious dining room with original fireplace opens into both a recently added conservatory and a versatile study/sunroom, ideal as a home office or creative space, with views over the garden. Natural light flows throughout, creating a warm and inviting atmosphere.

Additional ground floor highlights include a guest cloakroom, internal storage, access to the integral garage, and original oak wood flooring throughout.

Upstairs, the home offers two generous double bedrooms and a third single bedroom. The bathroom is beautifully presented, featuring a standalone bathtub, separate shower, traditional wood-panelled walls, and a single W.C.



The main bedroom benefits from ample built-in wardrobes and enjoys lovely views of the rear garden. Further features include an airing cupboard and access to a spacious loft.

Outside, the property sits on a generous plot with off-road parking for two vehicles flanking a central flowerbed island. The private, quite, south-east facing rear garden is a true retreat, featuring an ornamental fishpond, an integral side shed, in-ground firepit, and a wide variety of established plants fruit trees and shrubs.

The property is ideally located within walking distance of both local train stations (offering direct links to London), independent shops, and essential amenities including a doctors surgery. Nearby attractions include the iconic De La Warr Pavilion, Egerton Park, and the scenic Bexhill seafront.



Lounge

15'1" x 13'1"

Dining Room

16'1" x 12'2"

Sun Room

11'10" x 8'10"

Garage

16'9" x 10'2"

Conservatory

13'5" x 10'10"

Kitchen

12'2" x 10'2"

Bedroom 1

16'1" x 12'6"

Bedroom 2

13'1" x 12'10"

Bedroom 3

10'2" x 8'10"

Council Tax Band - E £3,130 per annum













INFORMATION

Tenure

Freehold

Local Authority

Rother District Council

Council Tax Band

E

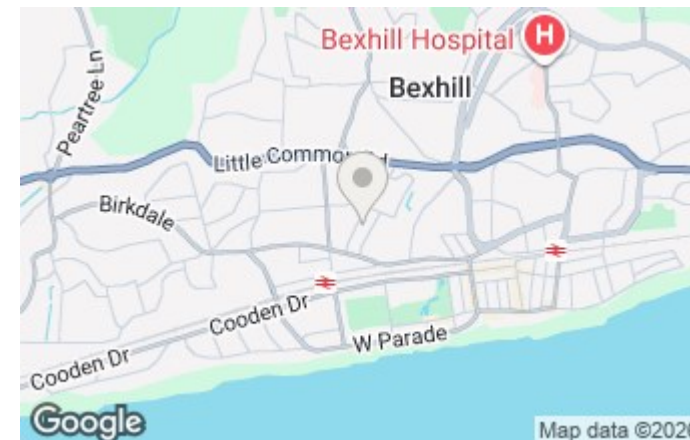
Opening Hours

Monday to Friday	9.00am - 5.30pm
Saturday	9.00am - 4.00pm

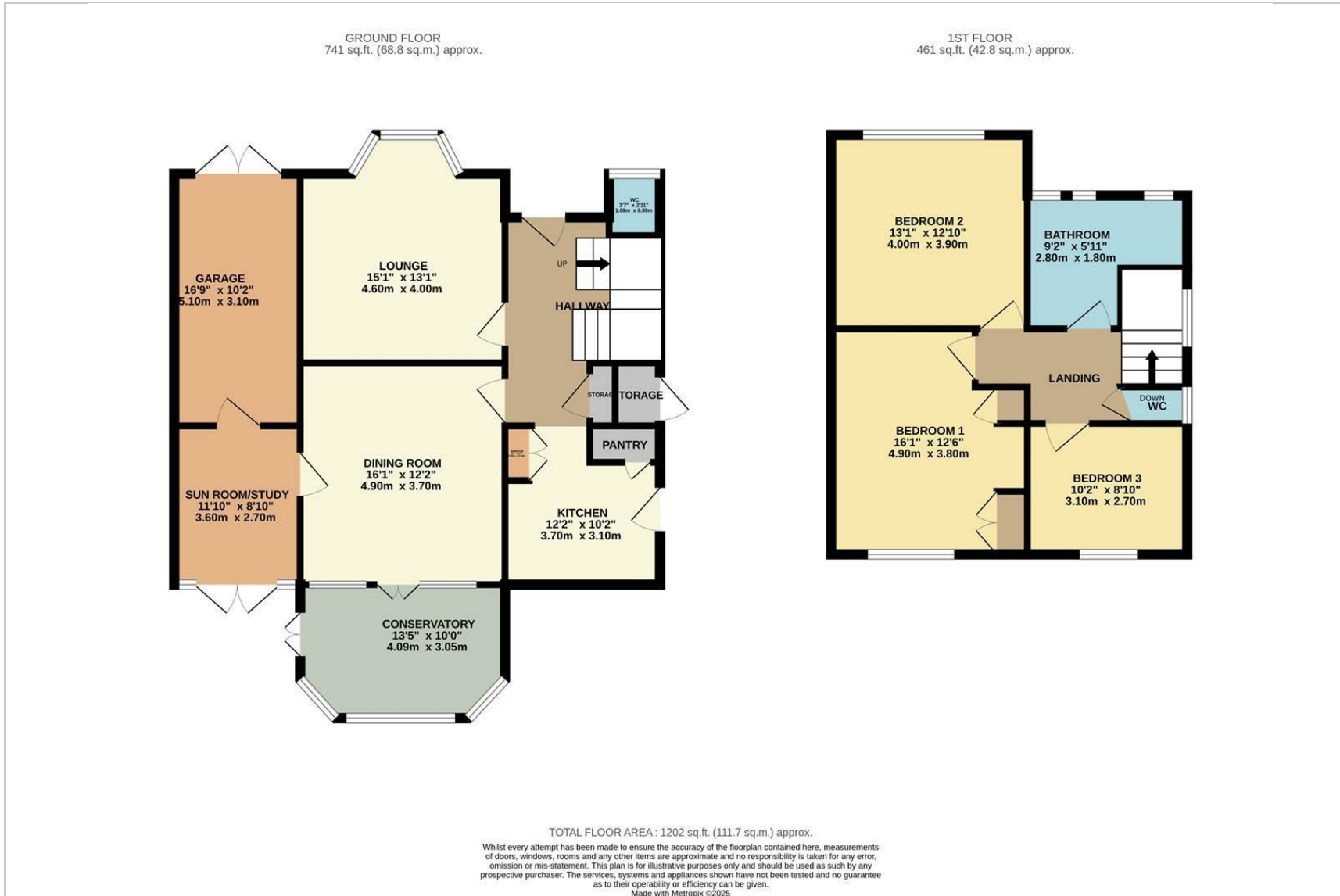
Viewings

Please contact us on 01424 224700 if you wish to arrange a viewing appointment for this property or require further information.

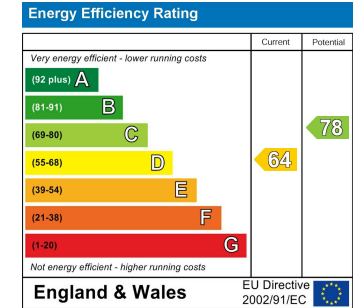
Area Map



Floorplan



Energy Efficiency Graph



These particulars, whilst believed to be accurate are set out as a general outline only for guidance and do not constitute any part of an offer or contract. Intending purchasers should not rely on them as statements of representation of fact, but must satisfy themselves by inspection or otherwise as to their accuracy. No person in this firm's employment has the authority to make or give any representation or warranty in respect of the property.